

**Public Health**  
Prevent. Promote. Protect.

Cortland County Health Department

# 2020-2021 TESTING & CONTACT TRACING PROTOCOLS



**HOMER**  
CENTRAL SCHOOL DISTRICT

# School Reopening COVID-19 Testing Protocol

*(As of August 10, 2020)*

## Ongoing Testing

- The Cortland County Health Department (OCHD) follows the guidelines established by the New York State Department of Health (NYSDOH) for testing that can be found here:  
[https://coronavirus.health.ny.gov/system/files/documents/2020/07/doh\\_covid19\\_revisedtestingprotocol\\_070220.pdf](https://coronavirus.health.ny.gov/system/files/documents/2020/07/doh_covid19_revisedtestingprotocol_070220.pdf).
- The Cortland County Health Department does not provide testing. Students and staff will be referred to their healthcare provider for symptoms. Care of the symptomatic person is up to the healthcare provider. We ask all people with any symptoms that are possibly related to COVID-19 to contact their provider for further guidance. Most local providers have testing capabilities.
- If you need a COVID-19 test, please contact the Cortland County Health Department at 607-753-5036; Cayuga Medical Center [www.register.cayugahealth.com](http://www.register.cayugahealth.com) or the Guthrie Cortland Medical Center at 607-299-7676.
- Some of the testing providers in the Cortland area include:
  - Family Health Network has a drive-thru for their own patients.
  - Guthrie Cortland Medical Center in Cortland has a drive-thru.
  - Rite-Aid in Cortland has a drive-thru.
  - Cayuga Medical Center has a drive-thru in Ithaca, near the mall located at 101 Dates Dr, Ithaca, NY 14850.

## Once a lab-confirmed case has been reported to the Cortland County Health Department

- A staff person (case investigator) from the healthcare provider or the county will contact the person who has a confirmed case and, in the case of a student, their parent/guardian.
- The health department will provide a person who is positive with an isolation order. It will also conduct daily follow-up phone calls with the person who is positive throughout the isolation period and determine the end of the isolation period through that process.
- School personnel will assist the health department in identifying any specifics pertaining to the exposure.
- The person with the confirmed case will be put in isolation for 10 days.
  - The 10-day period begins on the day of the test for asymptomatic cases or on the day that symptoms started.

- Release from isolation can only be granted by the Cortland County Health Department.

# School Reopening COVID-19 Contact Testing Protocol

## Contact Tracers

- All contacts of a person with a confirmed case will be interviewed to determine the exposure risk.
- A 14-day quarantine will be issued by the contact tracer for all close contacts of the person with the confirmed case.

## Quarantine process

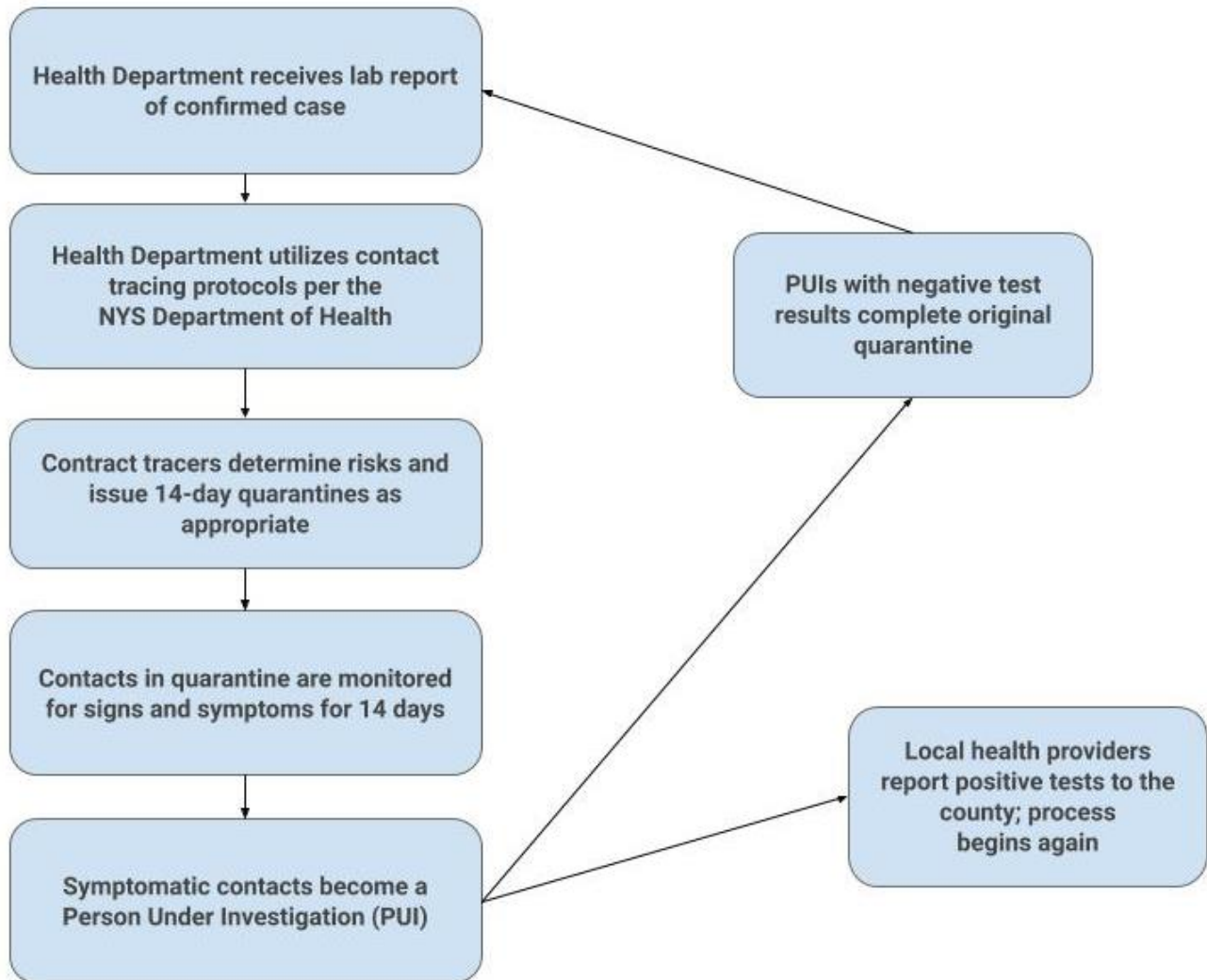
- Those directed to quarantine will be directed by their local health professional on the next steps.
- Contacts who develop symptoms will become a Person Under Investigation (PUI) and are referred for testing and further investigation.
  - Positive tests for PUI are reported to the Cortland County Health Department, and the process begins again.
- Release from quarantine can only be granted by the Cortland County Health Department.

## Guidance from the Cortland County Health Department on a school closure related to a positive case

- School closure depends on the rate of infection in the community.
- Closure will occur with the consultation and guidance of the health department and can vary depending on the situation.

# COVID-19 Student Contact Monitoring Process

## Contact Monitoring Process



*School administrators, school health staff and student support services will provide the health department with information and assistance with its investigation upon request.*